

Can't see the pictures? Email not displaying correctly? [Try viewing it in your browser.](#)

# PLAN-Boulder County

## Newsletter

### December 2010

For many people December is the month of gift-giving. Tired of offering the same old necktie, after-shave lotion, or box of chocolates to family and friends? Then include some exciting PLAN-Boulder items on your shopping list. You can order a PLAN-Boulder two and a half inch diameter button for only \$.99 each, or a PLAN-Boulder four inch diameter, circular sticker ideal for notebook covers, bike fenders or even car bumpers for \$.49 each. And for that special person on your gift list you should get the hard-cover, deluxe edition of PLAN-Boulder's ground-breaking publication *Does Dense Make Sense?*, autographed by its authors. It sells for a mere \$29.99. Whether you are celebrating Christmas, Hanukkah, the winter solstice, Kwanza, and/or nothing at all, we wish you a joyous experience.

### Board Transitions

Board member Leonard May has taken a leave of absence from the board while he works in Haiti for a Dutch development organization called Cordaid. An architect, Leonard was one of the crucial citizen activists who led the fight for the city's compatible development ordinance in 2008 and 2009. He also served on the city's Landmarks Board. Leonard is an expert in the development field, having spent years in Malawi, Sri Lanka, and Bosnia-Herzegovina. We bid him a safe and productive trip.

### Forum Summaries

#### Community Choice Aggregation, November 8

### Upcoming Fora

Friday, December 10, noon to 1:30 p.m. Boulder Creek Room, main Boulder Public Library, *The Current and Future States of the Local Information Media and their Effects on Civic Life*. Panelists:

- Jefferson Dodge, Managing Editor of *The Boulder Weekly*
- Sam Fuqua, General Manager of KGNU
- Al Manzi, President and Publisher of *The Daily Camera*
- Richard Valenty, former city reporter and elections editor of *The Colorado Daily*, current aide to State Senator Rollie Heath

Please visit the [PLAN-Boulder County website](#) for updates to the forum schedule.

### Join us

PLAN-Boulder County is on the Web at [www.planbouldercounty.org](http://www.planbouldercounty.org). To become a member, please join via our [website](#) or send your check to P.O. Box 4682, Boulder, CO 80306. Our regular dues are \$25 a year, \$35 for a household, \$50 or more sustaining, and \$15 for a student or someone on limited income. Please include your e-mail address and phone number.

### PLAN-Boulder County Board

Board meetings are open to members and are usually the first Monday of the month. Please call to confirm, 303-473-9979.

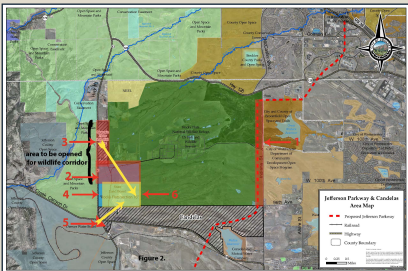
### Board members

- Pat Shanks, Co-chair
- Ruth Blackmore, Co-chair
- Liz Payton, Vice-chair



Paul Fenn, the co-founder of Community Choice Aggregation (CCA) and president of [Local Power, Inc.](#), explained at a PLAN-Boulder forum on the evening of November 8, 2010 that CCA is an alternative to both municipal power systems and investor-owned utilities and a way of allowing masses of customers to buy electricity from an alternative energy provider. Colorado does not currently authorize CCAs. So, unless the state law changes, this concept in its current form cannot be implemented by the City of Boulder. [Read the entire article on the Blue Line.](#)

### Jefferson Parkway, November 17



On November 17 the Jefferson County Commissioners passed a resolution offering to pay \$5 million to the State Land Board to purchase Section 16 at the southwest corner of the Rocky Mountain Wildlife Refuge, if the City of Boulder and Boulder County also pay \$2 million each and drop their opposition to the proposed Jefferson Parkway, City of Boulder Mayor and forum panelist Susan Osborne disclosed at a PLAN-Boulder forum on November 19. Section 16 is a 640-acre parcel bordering the east side of Highway 93 which preservationists covet in order to prevent commercial and residential development from spreading north and to create a corridor for wildlife to migrate between the Refuge and the foothills to the west. The State Land Board is asking \$10 million for Section 16, Osborne said; and under the Jefferson County Commissioners' offer another \$1 million would have to be raised from other sources. If Section 16 is acquired, Boulder officials expect that it would ultimately be incorporated into the Refuge, Osborne indicated. [Read the entire article on the Blue Line.](#)

- John Spitzer, Treasurer
- Alan Boles, Secretary, Newsletter Editor, Forum Guy
- Ray Bridge
- Dick Harris
- Suzanne Jones
- Eric Karnes
- Scott McCarey
- Leonard May
- Susan Morris
- Susan Peterson
- Morgan Rogers
- Max Taffet
- Molly Tayer
- Archivist: Bruce Bland



## PLAN-Boulder County

You are receiving this email because you requested updates from PLAN-Boulder County

[Unsubscribe](#) [liz@bouldergarden.net](mailto:liz@bouldergarden.net) from this list.

Our mailing address is:  
P.O. Box 4682, Boulder, CO 80306  
Copyright (C) 2011 PLAN Boulder County All rights reserved.

[Forward](#) this email to a friend

[Update your profile](#)

